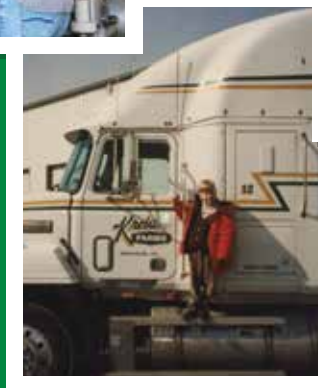
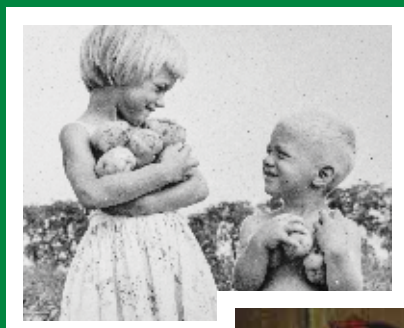




From Our Farm to Your Family Since 1935



Message From The CEO

At Kreider Farms, we embrace a family-focused culture that extends beyond our ownership—valuing our employees as an essential part of the Kreider family. We are passionate about animal welfare, the integrity of our operations, and investing in our team members, who bring our mission to life every day.

From the fields and barns to the tables of families across the region, our farm-to-fork approach ensures that



each product is a testament to our commitment to quality, community, and care. This milestone year is not just a celebration of where we've been, but a reaffirmation of our dedication to building a sustainable and innovative future.

As we celebrate 90 years at Kreider Farms, I am filled with gratitude for the generations of dedication that have made this milestone possible. My grandfather laid the foundation for a family-owned farm rooted in hard work, and our commitment to quality and innovation has continued through each generation. I want to thank our team, community, and loyal customers for your trust, support, and shared belief in what we do. Together, we've grown from humble beginnings to a company that's proud to bring wholesome, farm-fresh products to your tables. Here's to 90 years of tradition, progress, and the future that lies ahead.



Ron Kreider
3rd Generation CEO



The 3rd, 4th and 5th generations of the Kreider Family
(l-r) Kaiden, Brooke, Maverick, Kyle, Hollee, Ron, Khalee and Kelli.



Bergey's TRUCK CENTERS

We are **Driven to Serve** all of your transportation needs at 50+ locations throughout PA, NJ, DE and MD.





Tom Beachler
President

Message From The President

I am excited to share that Kreider Farms will be celebrating 90 years of success in 2025!

From our humble beginnings, we have become a diversified company that is constantly growing and exploring cutting edge technologies within the poultry, agriculture, dairy, and food/beverage industries. Because of this commitment to success, our team is constantly striving to improve our processes, traveling the world to educate themselves on the best equipment, technology, and techniques currently being utilized for success. These tireless endeavors have resulted in the production and delivery of the highest quality farm fresh eggs, milk, and ice cream, all produced from our 4th generation family farm.

Another area we take very seriously is sustainability. It is not only a mission or a program, but sustainability is also a way of life at Kreider Farms. Being good stewards of the land with which we have been entrusted is part of our company's core mission. That is why we're fully invested in exploring and im-

plementing technology that will benefit our environment for future generations to come; it is simply common sense. At Kreider Farms, we have adopted several practices to reduce, reuse, and recycle whatever we can to help keep our environment clean, starting with a zero-tolerance for waste in our Egg and Dairy operations. But we never want to become complacent in our environmental and sustainability efforts. We are always researching evolving technologies and renewal energy sources to be used in our state-of-the-art facilities. From solar panels, to low emission generators, to conversion of manure to biogas, Kreider Farms takes its commitment to the environment, sustainability, and regenerative farming very seriously. We always have, and we always will.



Tom Beachler
President of Kreider Farms



Congratulations to
Kreider Farms

On 90 years of outstanding service!

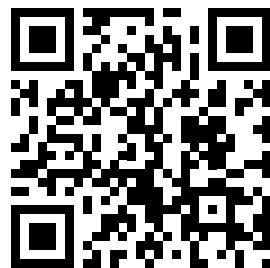


Jetro/RD is a proud distributor of Kreider Farms Eggs

From your friends at
Jetro/ Restaurant Depot

Savings • Selection • Service • 7 Days A Week!®

Fresh & Frozen Meats • Provisions • Fresh Eggs & Dairy
Fresh & Frozen Seafood • Farm Fresh Produce
Groceries & Dry Goods • Frozen & Refrigerated Foods
Domestic & Imported Cheeses • Full Line of Paper Products
Cleaning & Janitorial Supplies • Kitchen Equipment & Supplies



Now with over
160 Locations
Nationwide

restaurantdepot.com

facebook.com/restaurantdepot • instagram.com/restaurant_depot

Message From The VP Of Sales & Marketing



Dave Andrews
VP-Sales & Marketing

We want to extend a sincere thank you to all our new and long-time friends and valued customers who have become part of our extended Kreider Farms family. Our 90th anniversary represents a milestone filled with many blessings.

Regarding the products we provide, Kreider Farms and Noah's Pride brands of eggs, milk, drinks and ice cream continue to represent the high-quality standards which have always been a hallmark of the Kreider Farms family farming culture.

This anniversary also represents a milestone in the many relationships we have cultivated over the past 90 years. Relationships with employees, vendors, our local community and of course with our customers and consumers. As a multi-generational Lancaster County family

farming organization, we understand the care and dedication it takes every day to bring high quality food from our farms to the table. It is and has been a collaborative effort.

So, as we celebrate our 90th anniversary in business, we want to take this opportunity to thank all our retail and wholesale customers for your past and continued support and collaboration to promote and distribute our high-quality products.



Dave Andrews
VP-Sales & Marketing





Congratulations!



- EST. 1935 -



Your friends at

G The
GIANT
Company

Carrying the Legacy Forward:

Kyle Kreider's Role In The Future Of Kreider Farms' Egg Business

As a fourth-generation member of the Kreider Farms family, Kyle Kreider didn't always envision himself in the egg business. Growing up, he harbored dreams of playing in the NFL or becoming a race car driver. But over time, drawn in by his family's legacy and the deep conversations he had with his grandfather about the farm's history, Kyle found his way back to the business that has been a defining force in his family for nearly a century.

Today, Kyle serves as a Senior Quality Assurance Specialist, focusing on the egg side of the business. "I specialize in the processing side – everything from ensuring finished product quality to overseeing safety standards," he explained. His job centers on making sure that every egg that leaves Kreider Farms meets a rigorous internal standard – one that often exceeds what's required by government regulators. "We're very much self-policing," he said. "More regulation doesn't worry me. I think our standards are high

enough that we'll easily exceed them."

Kreider Farms has long been known for its vertically integrated egg operation, where every aspect from pullet rearing to final packaging is managed in-house. That model allows for tighter control, better efficiency, and stronger quality. Kyle's role in quality assurance touches every part of that pipeline, and he's proud of the trust customers place in their eggs – whether under the Kreider name, the Noah's Pride brand, or one of the many private labels they pack for.

The scale of the operation still surprises Kyle. "One of the things I've come to understand is just how far – reaching our company actually is," he said. "We send eggs all over – from Massachusetts to Kentucky – and work with major retailers and food-service customers like US Foods." That reach has only grown in recent years, as Kreider Farms has invested heavily in production capacity and automation to meet rising demand and evolving customer needs.

Among the most exciting developments, Kyle said, is the farm's adoption of robotics and new processing technologies. "We already have robotic palletizers and packers at a few of our facilities, and we're adding more systems like automated shrink wrappers and five – dozen packing lines," he noted. For Kyle, the benefits are twofold: "They make the process more efficient, but they also improve the work environment. Instead of doing repetitive manual labor, employees are learning to operate and program robots. It's a whole new skillset."

That forward-looking mindset is something Kyle



Kyle Kreider

Senior Quality Assurance Specialist

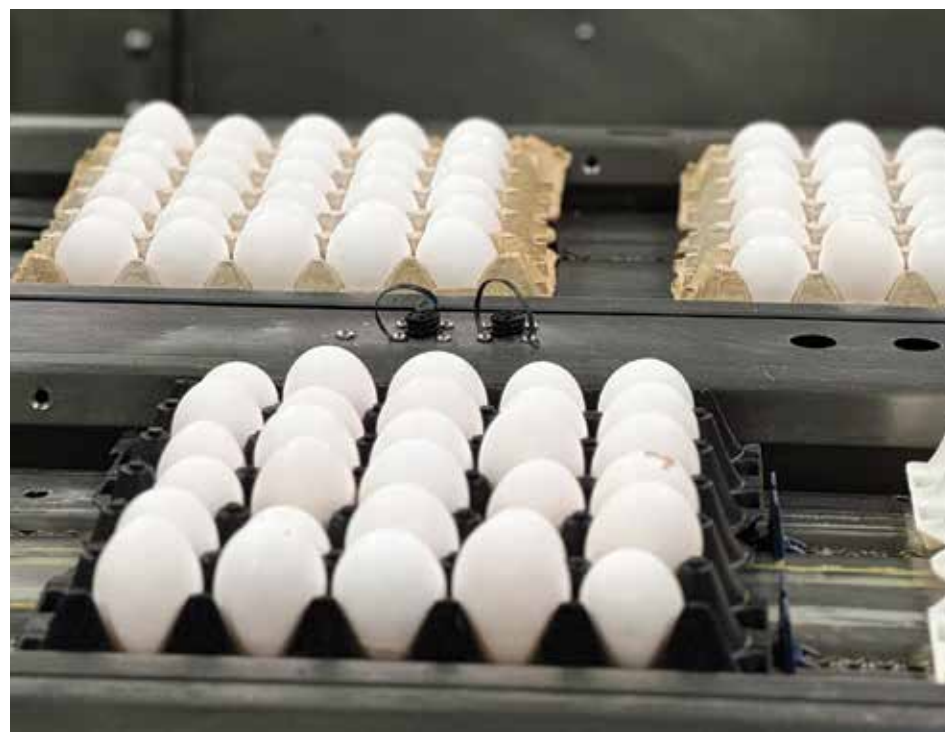
proactive about safety, labor efficiency, and sustainability. "Quality isn't just something we do once – it's a habit," he said, echoing a favorite quote from the Director of his department.

As someone who's worked across different parts of the business – from the milk plant to the farm shop – Kyle brings a well-rounded perspective to his role. And with his wife recently joining the company and his two children already showing interest in farm life, it's clear the Kreider legacy is poised to continue into a fifth generation.

For Kyle, being part of a family business is more than just carrying on a tradition. "Each of us has our own specialty – mine is eggs, my sisters handle marketing and dairy – and it's fun to come together and share our different perspectives," he said. "It keeps the business strong and moving forward."

embraces. He understands that the future of egg production lies not only in meeting consumer demands for cage-free or organic eggs, but also in being

With one foot rooted in history and the other in innovation, Kyle Kreider represents the next chapter in a story that began on a small farm in 1935 – and continues to grow with purpose.





CONGRATULATIONS

TO KREIDER FARMS ON

**90
YEARS
IN BUSINESS**



At Scenic Ridge, we take pride in constructing spaces that **help businesses like Kreider Farms grow and thrive.** Thank you for trusting us to build for your future!



717-768-7522
2554 Steelton Road,
Lancaster, PA 17601
info@scenicridge.com
ScenicRidge.com

From Fashion To Farming:

Khalee Kreider Helps Shape The Voice Of Kreider Farms

Khalee Kreider never planned to join the family business. In fact, when she left Central Pennsylvania to study fashion design at the Savannah College of Art and Design before later working in Philadelphia as a designer for Anthropologie, her path seemed far from the fields and barns of Kreider Farms. But after experiencing burnout in the fast-paced fashion industry, Khalee returned home looking for a new purpose – and found it where she least expected: at the fourth-generation family farm.

Today, Khalee serves as Director of Marketing at Kreider Farms, a role she's shaped from the ground up over the past eight years. "There wasn't really a marketing department when I started," she said. "A lot of the work was outsourced or handled on a project-by-project basis. My first task was building our social media presence and connecting directly with consumers." What began as a small initiative has grown into a comprehensive in-house marketing program. Khalee now oversees everything from social media strategy and graphic design to packaging, trailer wraps, website management, advertising, and the company's sustainability reports.

Her background in design and creative storytelling has been instrumental in modernizing how the farm communicates with the outside world. "It's been fun and challenging," Khalee explained. "It's a lot more than I expected when I first came in, but the diversity of projects keeps things interesting." Recently, she helped expand the marketing team, hiring a specialist to manage day-to-day social media so she could focus on larger initiatives that reflect Kreider Farms' evolution and growth.

Khalee's creative journey from fashion to farming mirrors the broader transition many modern family businesses face: balancing legacy with innovation. Though she didn't grow up



Khalee Kreider
Director of Marketing

doing daily chores on the farm, like earlier generations, she brings a deep appreciation for the family legacy and the people behind the brand. "We didn't feel pressure to join the business growing up," she said. "That freedom probably helped all three of us [siblings] choose to be here now, in roles we're passionate about."

That passion extends beyond branding. Khalee also helps guide Kreider

Farms' public-facing educational programs, including its immersive Farm Tour, which invites visitors into the heart of the dairy operation. "The tours are a way for us to open our doors and show people exactly how their food is produced," she explained. From the birthing center where guests may witness a calf being born to the high-tech milking carousel and the 100-foot Silo Observation Tower overlooking the farm, the tours have become a powerful platform for transparency and trust. "It's about creating a connection," she said. "When people see how much care goes into our work, it changes the way they think about food."

Looking toward the future, Khalee is realistic about the challenges ahead. While she and her siblings each have their own specialized roles within the company – hers in marketing, her sister's in dairy, and her brother's in eggs – none of them are positioned to take over leadership of the entire business on their own. "That's something we're starting to prepare for," she said. "When the time comes,

we'll likely look for a leader who shares our values and can carry on our mission alongside the family. It's important that person treats this company like family too."

As Kreider Farms approaches its 100th anniversary in the coming decade, Khalee remains focused on preserving the core values that built the company – trust, quality, and gratitude. "We would never have made it to 90 years without the support of our employees, our retail partners, and our community," she said. "Everything we do now is about honoring that support and building something even stronger for the next generation."

In Khalee Kreider's hands, the future of the brand is not only secure – it's inspired. With creativity, humility, and a deep respect for her roots, she's helping write the next chapter of Kreider Farms, one thoughtful message at a time.





World Vision extends the warmest
congratulations
to everyone at Kreider Farms for
90 years of farming excellence.



As World Vision celebrates its 75th anniversary, we're grateful for partners like Ron and Hollee Kreider who continue to have an incredible impact worldwide.

With the support of amazing partners, World Vision is committed to tackling the root causes of poverty to build a better world for all people—like Yessica in Honduras (pictured), who gained knowledge, self-esteem, and a sustainable path forward. Together, we can help families around the world create brighter futures.

worldvision.org

Rooted In Care:

Kelli Kreider And The Heart Of Kreider Farms' Dairy Operation

For fourth-generation family member Kelli Kreider, the dairy side of Kreider Farms isn't just part of the business - it's where her heart is. Growing up surrounded by the rhythms of farm life in Lancaster County, PA, Kelli gravitated toward the care of animals, especially the calves and cows that form the foundation of the farm's dairy program. Today, her work as Herd Manager embodies the farm's longstanding values of compassion, quality, and responsibility, with a personal touch that reflects generations of commitment.

Kelli has carved out a role in the family business focused squarely on animal care, especially with the youngest members of the herd. She has spent countless hours in the calf nursery, where newborns are welcomed into a carefully monitored environment designed for warmth, nutrition, and comfort. "There's something really special about working with the calves," Kelli has said. "You're setting the stage for the next generation of milk producers, and every little detail matters."



Kelli Kreider
Herd Manager

From the nursery, the young heifers are gradually transitioned through specialized stages of development, preparing them to join the milking herd when they reach maturity. Kelli plays an active role in overseeing this process, working alongside a skilled team that ensures every animal receives personalized attention. "It's about more than just production," she notes. "It's about raising healthy, happy animals in the most humane and sustainable way possible."

The Kreider dairy herd, primarily Holstein cows, is housed in climate-controlled barns and monitored through advanced herd management systems that track health, nutrition, and milk output. But despite the technological support, Kelli emphasizes that hands-on care remains irreplaceable. "Technology helps us be more efficient and

precise, but it's our daily connection with the animals that keeps everything running smoothly."

Once the cows are milked, the product travels just steps away to Kreider Farms' on-site processing plant, where it's pasteurized, bottled, and prepared for distribution across the Mid-Atlantic. From whole and skim milk to seasonal flavored beverages, the dairy lineup reflects the farm's ability to meet modern consumer expectations while staying rooted in tradition.

Kelli's deep involvement with the animals also connects to the farm's broader sustainability mission. "Caring for animals and caring for the environment go hand in hand," she says. Manure from the barns is processed into fertilizer for the farm's fields, creating a closed-loop system that supports crop production. Water use is carefully managed, and solar panels help offset ener-

gy needs across the property.

As part of the fourth generation now working at Kreider Farms, Kelli brings a perspective that is both forward-thinking and deeply respectful of the past. She's joined by her siblings in key areas of the business - each with their own focus, but all united by a shared belief in stewardship and integrity. "We've always said that quality isn't a task - it's a habit," she explains. "That applies to the milk we produce, but also to the way we treat our animals and our land."

For Kelli, the dairy barn is where that philosophy comes to life. Her daily work may be quiet and behind the scenes, but its impact is felt across every glass of milk that bears the Kreider name. Through her hands-on care and unwavering dedication, the next generation of cows - and Kreiders - is in good hands.



FULL SERVICE REPRESENTATION IN THE NORTHEAST

Get the Attention You Deserve

Metro NY/NJ and New England

PO Box 36
Woodbridge, NJ 07095
Contact:
Mikel Waldon
President / CEO
732-326-9300
732-326-9310 fax
mwaldon@empirefoodmarketing.com



Mid-Atlantic Region

PO Box 268
Middletown, PA 17057
Contact:
Peter Sosik
President - Mid-Atlantic
717-657-5702
fax 717-657-7939
psosik@empirefoodmarketing.com

Congratulations to Kreider Farms On Your 90th Anniversary!

Congratulations to Kreider Farms on
their 90-year anniversary!



TRANSPORTATION



LIVE PRODUCTION



FLOCK SERVICES



HANDLING SERVICES



RISSER'S POULTRY INC.
FAMILY OWNED & OPERATED SINCE 1928

12 Wynfield Drive, PO Box 52, Lititz, PA 17543
(717) 626-5466 | RissersPoultry.com

From Heritage To Harvest:

The Generational Journey Of Kreider Farms In Lancaster County

Kreider Farms, a cornerstone of Lancaster County's agricultural heritage, traces its origins to the early 18th century. In 1736, Christian Hershey, an ancestor of the famed Hershey family, acquired 400 acres of fertile land and constructed the original farmhouse that would remain central to the family's farming endeavors for generations.

This land remained within the Hershey lineage until 1935, when John B. Hershey sold the farm to his daughter, Mary Hershey, and her husband, Noah W. Kreider Sr. The couple, along with their young sons Richard and Noah Jr., relocated to the property, marking the inception of Kreider Farms. Beginning modestly with 102 acres, a dozen dairy cows, and 200 chickens, the family cultivated vegetables and sold them door-to-door in Manheim, embodying the

industrious spirit of the era.

As the Kreider family expanded, so did their agricultural pursuits. Adjoining farms were acquired, and the focus shifted towards dairy and egg production. A significant milestone was reached in 1972 with the establishment of an on-site processing plant and retail store, enabling the farm to bottle its own milk and craft premium ice cream. This vertical integration not only enhanced product quality but also solidified Kreider Farms' reputation in the local community.

Today, under the stewardship of third-generation leader Ron Kreider, Kreider Farms has evolved into a multifaceted enterprise spanning more than 3,000 acres. The farm is home to an 1,800 cow milking herd and six

million chickens, producing a diverse array of products, including farm-fresh milk, ice cream, and eggs. Despite its growth, the farm remains deeply rooted in the values of quality, hard work, and ethical integrity instilled by its founders.

In addition to their agricultural endeavors, Kreider Farms actively engages in sustainable practices and community initiatives. The farm has implemented regenerative farming techniques, such as crop rotation and no-till farming, to preserve soil health and protect local waterways. Investments in renewable energy, including the installation of over 2,000 solar panels, underscore the farm's commitment to environmental stewardship. Furthermore, Kreider Farms has collaborated with Penn Township to develop a water supply and treatment facility, reflecting its dedication to community development.

As the company celebrates its 90th anniversary, a fourth generation of the Kreider family is playing significant roles on the farm. Kyle Kreider currently services as the company's Senior Quality Assurance Manager in the Egg Division, Kelli Kreider is the Herd Manager overseeing the health and welfare of the company's cows, and Khalee Kreider is Director of Marketing, helping craft the company's face in the community and online.

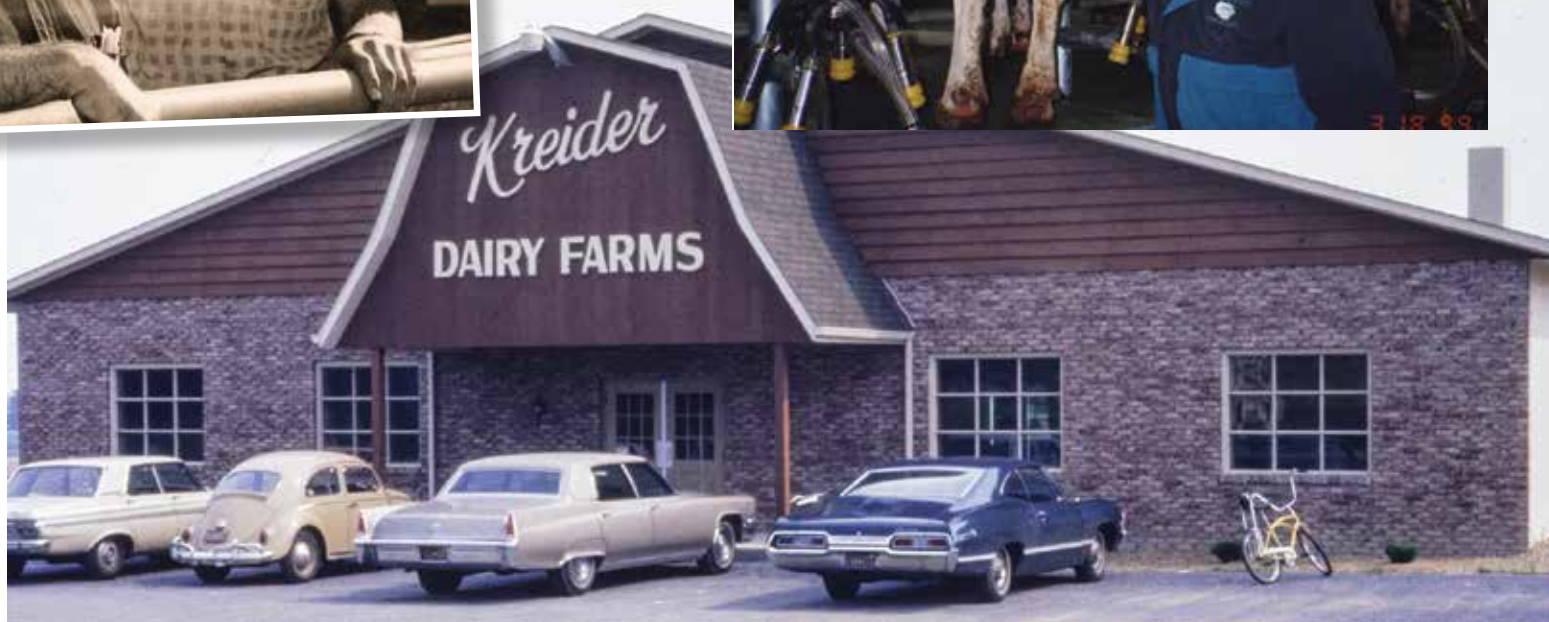
Kreider Farms' journey from a humble family operation to a leading agricultural enterprise exemplifies a harmonious blend of tradition and innovation. By honoring their rich heritage while embracing modern practices, the farm continues to deliver high-quality products to their customers, embodying the enduring spirit of Lancaster County's farming community.



Top left: Noah Kreider Sr. and Noah Kreider Jr. in 1970.

Top right: Ron Kreider with the company's milk carousel in 1999.

Bottom: The original Kreider Farm Milk Processing Plant in 1972.



Congratulations to Kreider Farm
in Celebrating **90 years!**

4WARD AG
TODAY'S FOCUS • TOMORROW'S LEGACY

INDEPENDENT EXPERTS IN RUMINANT NUTRITION

- Customized Nutrient-Based Formulation
- Targeted Solutions for Your Business
- Industry-Leading Experience

INFO@4WARDAG.COM

**PROVEN
RESULTS
FOR OUR
CLIENTS**



Mark Hershey Farms, Inc.

CUSTOM FEEDS & STEAM-FLAKED GRAINS

Animal Nutrition | Seed Sales | Grain Purchasing & Sales

HELPING AGRICULTURE GROW FOR OVER 80 YEARS

MarkHersheyFarms.com | (717) 867-4624

Moba congratulates
Kreider Farms with their

90th anniversary!

MOBA

Egg Industry Solutions

*Building your
sustainable
egg future*

moba.net

Growing With Purpose:

Kreider Farms' Expanding Legacy In Egg Production

Kreider Farms has become a cornerstone of agricultural excellence in the Northeast, and nowhere is that more evident than in their egg production program. From their humble origins as a small family farm to a vertically integrated leader in the egg industry, Kreider Farms has grown steadily over nine decades—driven by innovation, sustainability, and the vision of CEO Ron Kreider.

The journey began in 1935 when Kreider's grandfather, Noah Sr., purchased the original homestead farm from his father-in-law, a Hershey, establishing the roots of a family legacy that continues to flourish. "He started out with 200 chickens and 10 cows," Kreider recalled. "When I graduated from high school, we had 10,000 egg layers. It's just kept expanding from there." That trajectory of consistent, thoughtful growth has defined Kreider

Farms' egg program ever since.

Today, the farm produces millions of eggs each week through a system that includes its own pullet operation and laying facilities. This integrated structure gives the company complete oversight, ensuring quality, safety, and freshness from hen to carton. Kreider Farms offers a broad spectrum of egg types, including conventional, cage-free, organic, and pasture-raised, with the Noah's Pride brand serving as a key example of their animal welfare commitment.

For Kreider, growth has never been about expansion for their own sake. "We keep trying to evolve and grow into areas that we're good at," he said. That mindset has led the company to build both new production facilities and acquire two egg companies in the past two years. With continued investment in new chicken barns and a focus on value-added products like egg - breaking and hard-cooked eggs, Kreider Farms is not only meeting market demand but shaping it.

That proactive approach extends to technology. "We are incorporating a lot of robotics at a rapid pace," said Ben Beachler, Vice President of Operations, noting that automated packing and stacking systems are helping meet changing packaging requirements while reducing labor. "We're willing to do whatever the customer wants within reason," he added. "We'll figure it out."

This responsiveness is core to the company's philosophy. Whether developing new products or adjusting packaging formats, Kreider Farms puts customer needs at the center of their decisions. "There's great demand for eggs from a quality producer like ourselves," said Tom Beachler, President of Kreider Farms. "We're growing in double digits in eggs through both acquisition and our own production increases." He added, "We believe

that eggs and dairy go well together, and so we offer a variety of products in our Kreider Farms product line. There's lots of opportunity in what we're already doing."

Even with their significant size, Kreider Farms retains the agility and values of a family-owned business. "Being a family organization allows us to attract quality people," Kreider said. "We try to cultivate a family culture around here and make it a fun place to work." That culture not only fosters long-term employee loyalty — some team members have been with the company for over five decades — but also supports quick decision making and innovation without the bureaucratic layers common in public companies.

Looking ahead, Kreider Farms is exploring continued expansion across all their core categories. While dairy and beverages are part of the company's growth story, the egg program remains a cornerstone. Distribution currently spans the Northeast from Virginia to Boston, with surplus eggs even reaching international markets like Asia and Puerto Rico. As regulatory landscapes shift and global competition increases, Kreider Farms remains well-positioned. "We're constantly monitoring policies and adjusting," Kreider said. "But our internal quality standards already exceed what's required."

Through a blend of forward-thinking leadership and deep-rooted values, Kreider Farms' egg production program exemplifies how a company can grow responsibly and successfully. "We will continue to innovate and try new things," Kreider said. "Sometimes they don't work, but if you're not failing occasionally, you're not building fast enough." It's a philosophy that has served Kreider Farms well — and promises to carry its egg business into an even more dynamic future.





Treating your birds like royalty.

TECNO housing systems are designed to promote a stress free environment because we know that **happy hens lay better and more eggs!**

Contact us to find out how we can help design the ideal cage-free pullet or layer system to best fit your needs.

We offer: Turnkey Projects | Building Solutions | Manure Drying Solutions

TECNO Poultry Systems, LLC
p: (717) 735.5484
e: tecno@tecnopoultry.com
w: tecnopoultry.com



Congratulations Kreider Farms!



Insurance & Risk Management Solutions for Businesses and Individuals
717-397-9600 • assuredpartners.com • Lancaster, PA

Noah's Pride: Dedication To Humane Farming And Sustainable Egg Production

Noah's Pride eggs, a flagship brand of Kreider Farms, represent more than just a specialty line of eggs — they embody a legacy of agricultural tradition, animal welfare, and sustainability. Launched in 2015, the brand was created when Kreider Farms began producing its own cage-free and specialty eggs. With a heritage deeply rooted in Lancaster County, PA, Kreider Farms is the last remaining full-scale egg and dairy farm in the United States, combining centuries-old farming values with state-of-the-art technology.

The name “Noah's Pride” pays tribute to the company's first and second generation founders — Noah Kreider Sr. and his son Noah Jr.

According to Dave Andrews, Kreider Farms' Vice President of Sales and Marketing, Noah's Pride includes a full range of value-add-

ed egg products: cage-free white and brown eggs, organic, free-range, and pasture-raised eggs. While these classifications vary — cage-free birds live in aviary systems without cages; free-range and organic birds have daytime outdoor access, with the latter fed an all-organic vegetarian diet; and pasture-raised birds forage freely on open pasture — the common denominator is a focus on animal welfare and USDA-defined production standards. These eggs, available in the Northeast from Virginia to Boston, cater to consumers who prioritize cage-based animal welfare and are willing to pay a premium for it.

All Noah's Pride cage-free eggs are American Humane Certified™, a designation that sets Kreider Farms apart. As Andrews notes, this is the oldest and most respected animal welfare certification in the country,

with roots dating back to the Civil War. Unlike animal activist organizations that oppose animal agriculture altogether, the American Humane Society supports responsible farming. They conduct rigorous inspections to ensure humane treatment, and Kreider Farms' adherence to these standards further demonstrates the integrity of the Noah's Pride line. Notably, Kreider Farms is also the only dairy farm east of the Mississippi to earn American Humane certification — a rare distinction that underscores the farm's comprehensive commitment to animal care.

Beyond animal welfare, Noah's Pride emphasizes sustainability. Kreider Farms has invested in solar energy, no-till farming, and advanced wastewater treatment systems to reduce environmental impact and preserve its farmland for future genera-

tions. This balance of innovation and stewardship is central to the company's operations, ensuring that its practices are as responsible as its products are wholesome.

Consumers can find Noah's Pride brand eggs at regional retailers like Acme, ShopRite, Giant, Redner's, Karns, Safeway, Wawa and McCafrey's where each carton represents more than a nutritious purchase — it reflects a vote of confidence in a brand that stands for compassion, transparency, and enduring family values.

In Andrews' words, Noah's Pride is not a marketing invention but a natural extension of the Kreider family's multigenerational mission. With every hen cared for and every egg collected, the brand honors its past while building a better, more humane future for farming.



Congratulations to Kreider Farms on 90 years of success!



Big Dutchman is proud to partner with Kreider Farms and egg producers all around the world to provide innovative solutions that meet every need.

+1-616-582-4000 | INFO@BIGDUTCHMANUSA.COM | WWW.BIGDUTCHMANUSA.COM



Saluting Kreider Farms on your 90th Anniversary!

Egg Packaging Products



CORRUGATED BOXES / PULP PACKAGING / RECYCLED PET / VOID FILLERS & PACKAGING ACCESSORIES

The Superior Packaging Experts • Since 1984

Jayme Hopman, Account Executive • 302.545.2107 • jhopman@falconpackaging.com

FALCONPACKAGING.COM

Behind the Barn Doors: Kreider Farms Tours Offer Education, Transparency, And Family Fun

At Kreider Farms in Manheim, PA, the public is invited not only to taste the freshness of local dairy but to step behind the scenes and witness firsthand what it takes to produce that glass of milk. Through its immersive Farm Tour program, Kreider Farms has created an experience that is both eye-opening and entertaining – pulling back the curtain on modern agriculture while sharing its deep roots in Lancaster County’s farming traditions.

Led by Farm Tour Director Debora Lobb, who has been guiding guests through the farm for more than 15 seasons, the tours have evolved significantly over the years. What began as car caravans guided via transponders has grown into a well-coordinated operation involving tour buses, trained guides, a Welcome Center and a fun-filled itinerary. Today, the

Farm Tour’s experience begins at the Welcome Center on Route 72, where guests board a bus for a narrated ride through the farm. One of the highlights is the “Moo-ternity Barn,” where visitors might catch the unforgettable sight of a calf being born. Another key stop is the state-of-the-art milking carousel, where 1,800 cows are milked three times a day. Guests can watch the process from an overhead viewing area and learn about the latest innovations in dairy technology.

The tour also includes time at Kreider’s 100-foot Silo Observation Tower, which offers sweeping views of the farm and Lancaster County. For children not tall enough to climb the silo, a nearby play area ensures that the experience is engaging for guests of all ages. “We see everything from local families to motor coach tourists

to school field trips from New York and New Jersey,” Lobb said. “Our tour groups really run the gamut – from preschoolers to senior citizens.”

With more than 11,000 guests annually, the farm tours have become a staple of Kreider’s public outreach. During peak seasons from May through October, especially during the school year, tours are tailored to suit the needs of various groups. While the general content remains consistent, guides adapt the tone and detail depending on whether they’re speaking to curious elementary schoolers or visiting agriculture students. “Our tour guides are amazing,” said Lobb. “They know how to match the tone to the group, whether it’s fun and light or more in-depth for ag-focused audiences.”

Transparency and education are the twin pillars of the program’s mission. “Only about two percent of the population works in agriculture today,” Lobb noted. “So we want to give people a real sense of how farming works – what goes into producing food – and show that we care for our animals and our land.” That sentiment was echoed by Khalee Kreider, who emphasized the company’s commitment to pulling back the veil. “We want people to feel invited, to see the whole process,” she said. “There’s so much that goes into just one glass of milk, and visitors always walk away surprised at how complex and thoughtful the operation really is.”

While education is a key goal, so is building trust and loyalty. According to Lobb, many guests become fans of Kreider products after seeing the farm in action. “People come on the tour, see how we treat our animals, how fresh our products are, and then they want to



Debora Lobb
Farm Tour Director

go out and buy them,” she said. Repeat school groups and word-of-mouth recommendations fuel the program’s growth. “I’ve been told that our tour was the highlight of someone’s vacation,” Lobb added. “That’s something we take a lot of pride in.”

The Kreider Farm Tour is offered from May through October and groups can expect to ride in comfort – on buses that accommodate up to 32 passengers, or even in their own school or motor coaches with Kreider guides onboard.

Each visit ends with a refreshing sample of Kreider’s chocolate milk, and while ice cream isn’t part of the tour itself, guests are directed to where they can find a scoop nearby. Reservations are required and can be made through the farm’s website or by phone, and as Lobb put it, “We may be a fourth-generation farm, but we’re very much part of the present – and the future – of agriculture.”

For Kreider Farms, the farm tour isn’t just about opening barn doors – it’s about opening minds.





Kreider Farms is 90?

We are EGGStremely excited and UDDERly amazed!
Congratulations on the many years of impactful service in our community!



Technical Security, Support, and Solutions For the Business Community
Audio and Video For The World
www.TCW-GAV.com

An advertisement for Paragon Poultry. The background shows a large blue semi-truck and several pickup trucks parked in front of a modern building. A blue banner across the middle reads "60 years of Poultry Hauling". In the top left is the Paragon Poultry logo, a yellow flame-like shape above the text "PARAGON POULTRY". In the top right, it says "Check out more about Paragon:" with a QR code. At the bottom, a path of small black arrows leads from the text "PLAYING OUR PART IN HOW YOUR EGGS GET THEIR START" to a circular callout box. The callout box contains the text: "We are a proud partner of Kreider Farms— congratulations on 90 years of business!". A small yellow chick is standing on a brown egg with the Kreider Farms 90 Years logo on it.

Kreider Farms Ramps Up Ice Cream Production With Major Expansion, Eyes Future Growth Across Dairy Lines

At Kreider Farms, the sweet taste of success starts with a scoop of ice cream – and lately, that scoop is coming faster and more consistently than ever before. The Lancaster County-based dairy recently completed a significant expansion of its ice cream production facility, transforming what was once a labor-intensive, hand-packed operation into a modern, high-capacity, automated line. As Craig Espenshade, site manager overseeing ice cream, milk, and drink production at the plant explained, “We went from filling by hand – which meant standing in one place for six or seven hours – to automated fillers, inclusion machines, and even a robot that builds our four-packs. It’s streamlined our operation without compromising quality.”



Craig Espenshade
Site Manager

The investment wasn’t just about increasing volume; it was about making life better for employees and improving product consistency. Ben Beachler, Kreider’s VP of Operations who oversees the milk division in addition to the egg division, saw an opportunity for innovation. “Everyone loves our ice cream,” he said. “But we were still hand-filling everything. I knew we could optimize the process, make it

better for our people, and do more with the same team. It was a great expansion, and it’s exciting because now we can sell even more.”

The expansion allows Kreider Farms to more than double its ice cream output – from about 88 gallons per hour



Ben Beachler
VP of Operations

to more than 200 gallons. Espenshade noted that the new equipment enables greater control over the inclusion of ingredients like cookie dough, chocolate chips, and fruit swirls, helping ensure customers receive exactly the flavor experience they expect. “We’re getting sci-

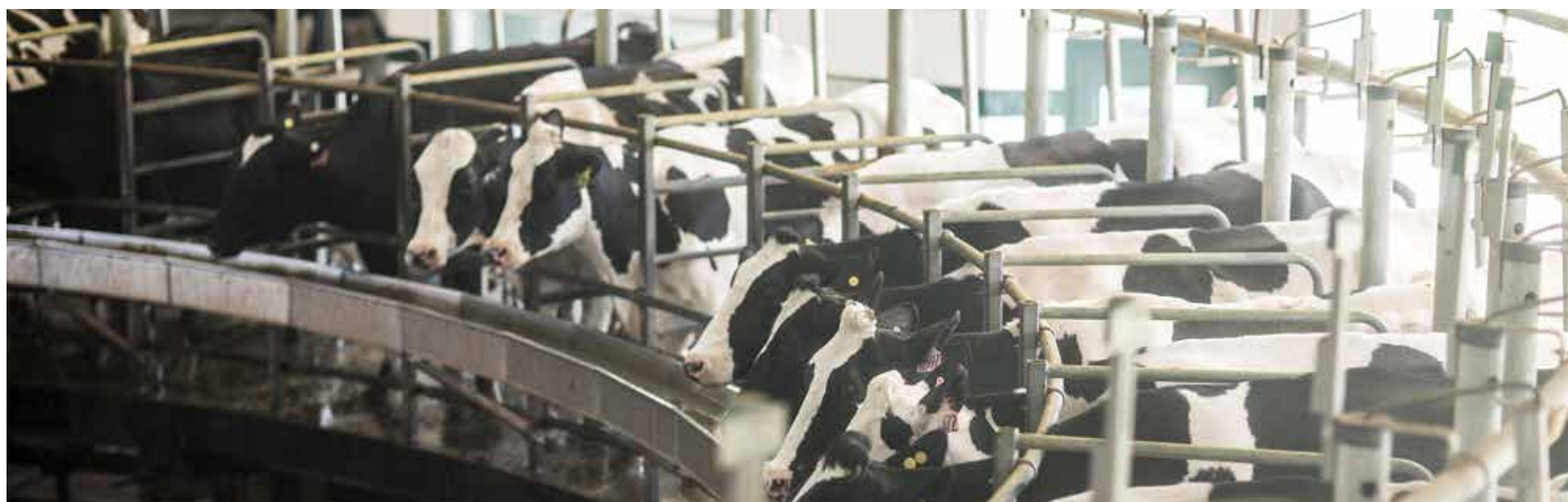
entific about it,” he said.

One thing that hasn’t changed is the source of Kreider Farms’ ice cream base: every scoop still starts with milk from the farm’s own herd of about 1,800 cows. “We have a closed herd,” said Beachler. “We don’t bring in cows or buy milk from outside farms. If you’re drinking or eating a Kreider product, it’s from our cows. That allows us to control quality and flavor from cow to cone.”

That consistency, paired with high butterfat content and minimal air incorporation, is what sets Kreider’s ice cream apart. Flavors range from classic Chocolate and Vanilla to more adventurous seasonal varieties like Peach Pie, Pumpkin Pie, and Peppermint Stick. With 20 year-round flavors and several seasonal rotations, the farm’s ice cream has become a favorite in stores across Pennsylvania, New York, New Jersey, Delaware, and Maryland.

The company’s roots in dairy stretch back to its founding in 1935, and today its commitment to freshness, animal welfare, and sustainability remains core to its mission. Kreider’s dairy cows

ICE CREAM on page 26



Congratulations on **90** YEARS



weismarkets.com



WE SPECIALIZE IN:

- ✓ Rotary - you choose the stall angle!
- ✓ Parallel ✓ Herringbone & More!



★ **GEA ROTARY NOW
MADE IN THE USA!**



Auburn, NY.....	315-252-9270	Rocky Mount, VA.....	540-489-5800
Batavia, NY.....	315-252-9270	Belleville, PA.....	717-935-7422
Clymer, NY.....	716-450-9967	Chambersburg, PA.....	717-352-7606
Conewango Valley, NY.....	716-358-9152	Roaring Spring, PA.....	814-224-0070
Mechanicville, NY.....	518-652-2383	Somerset, PA.....	814-444-8502
Harrisonburg, VA.....	540-867-3251	Troy, PA.....	570-297-2012

**MAIN OFFICE
LEDLA, PA
717-656-3307**



www.FisherThompson.com [f /fisherthompsoninc](https://www.facebook.com/fisherthompsoninc)

Rooted In Responsibility:

Kreider Farms Champions Sustainability Through Innovation, Stewardship, Animal Welfare

Kreider Farms, located in Lancaster County, PA, has long been committed to sustainable and regenerative farming practices that prioritize environmental stewardship, animal welfare, and community engagement. Their philosophy centers on implementing innovative techniques and investing in technologies to enhance waste management, conserve natural resources, and produce clean energy.

“Sustainability is not only a mission or a program,” said Tom Beachler, President of Kreider Farms, “but a way of life. Being good stewards of the land with which we have been entrusted is part of our company’s core mission. That is why we’re fully invested in exploring and implementing technology that will benefit our environment for future generations to come – it is simply common sense.”

A key aspect of Kreider Farms’ sustainability efforts is their comprehensive waste recycling program. The farm transforms cow and chicken manure into nutrient-rich fertilizers used across their fields. In their dairy operations, liquid by-products are treated and converted into bio-available fertilizers, promoting efficient nutrient absorption by crops and reducing

potential runoff into local watersheds. Solid waste undergoes processing to create renewable bedding for cows, ensuring comfort while recycling resources. Similarly, chicken manure is collected daily, dried to retain nutrients, and supplied to farms throughout the Northeastern United States as an economical fertilizer option.

To preserve soil health and prevent erosion, Kreider Farms employs no-till farming and crop rotation techniques. No-till farming minimizes soil disturbance, enhancing water absorption and maintaining organic matter, while crop rotation introduces diversity, replenishes nutrients, and improves soil structure. These practices contribute to the overall health of the land and support sustainable crop production.

Protecting local waterways, particularly the Chesapeake Bay watershed, is another priority for Kreider Farms. The farm utilizes bio-available fertilizers that promote nutrient absorption by plants, thereby reducing nutrient runoff. Additionally, they have established

riparian buffers – protective zones of trees and grasses along stream banks – to filter rainwater, prevent erosion, and safeguard water quality.

In the realm of renewable energy, Kreider Farms has invested in solar power to reduce their carbon footprint. More than 2,000 solar panels installed on the roofs of their chicken houses generate approximately 3.5 million kilowatt-hours of clean energy annually, sufficient to power around 300 local homes each year. “We are always researching evolving technologies and renewable energy sources to be used in our state-of-the-art facilities,” Beachler added. “From solar panels to low-emission generators to conversion of manure to biogas, Kreider Farms takes its commitment to the environment, sustainability, and regenerative farming very seriously. We always have, and we always will.”

Animal welfare is integral to Kreider Farms’ operations. They are proud to be the first dairy farm east of the Mississippi to achieve American Humane

Certified™ status, reflecting adherence to rigorous standards for the humane treatment of farm animals. This certification assures consumers of the ethical practices employed in their dairy and cage-free egg production.

Ron Kreider, CEO and third-generation leader of the company, emphasized how sustainability reflects the family’s broader values: “Our farm-to-fork approach ensures that each product is a testament to our commitment to quality, community, and care. This milestone year is not just a celebration of where we’ve been, but a reaffirmation of our dedication to building a sustainable and innovative future.”

Through these multifaceted initiatives, Kreider Farms exemplifies a holistic approach to sustainability – balancing agricultural productivity with environmental responsibility and ethical stewardship. With a culture rooted in innovation and care, the company continues to lead by example, driven by a belief that farming with integrity is essential to securing a better tomorrow.



Celebrating Kreider Farm's 90th Anniversary

CARGAS[®]

Software to Power Your Business
Cargas.com



90 years!
"Congratulations on this eggciting milestone. Proud to be your partner in progress."

- Hendrix ISA LLC

HENDRIX GENETICS

ICE CREAM

from page 22

are milked three times daily, and the milk is chilled within minutes, then bottled in their own processing plant right on the farm. All products are certified Ko-



sher, designated PA Preferred, and carry the American Humane Certified™ seal. “Animal welfare is key,” Beachler emphasized. “That’s what we do as farmers every day – we care for our animals, and they give us the milk and eggs we sell.”

In addition to milk, the farm produces a robust line of beverages, including teas and lemonades in a wide range of flavors. Standouts like Blueberry Lemonade and Peach Mango Lemonade have built a loyal following. “We stick with base favorites but like to get a little adventurous,” Espenshade said. Seasonal drinks such as Apple Tea and Strawberry Kiwi Lemonade add excitement to the lineup.


Kreider’s milk portfolio includes everything from whole and low-fat varieties to Chocolate, Strawberry, and even Iced Coffee Mocha Milk. Eggnog, a holiday favorite, is produced in large volumes every fall and winter.

As Kreider Farms celebrates 90 years in business, it’s looking ahead with renewed energy and a deep commitment to quality. With its ice cream production now poised for growth and its broader dairy operations gaining traction, the company is positioned to keep delivering farm-fresh flavor to families across the region. “This is a passion project,” said Espenshade. “And it’s probably the best ice cream in the world.”



From your friends at





International Paper is a leader in innovative fiber-based packaging, creating solutions that protect goods, enable global trade and enhance consumer safety. We strive to continually advance the packaging industry toward a more sustainable, circular future.

Congratulations to our friends at Kreider Farms on celebrating their 90th anniversary!



Helping businesses thrive is important.

At M&T Bank, we understand that small business is the lifeblood of any thriving community. Which is why we are committed to providing our support and keeping our lending decisions local. [See what we can do for your business at your neighborhood branch or \[mtb.com\]\(https://www.mtb.com\) today.](#)

Congratulations to Kreider Farms for their successful 90 years, from your friends at M&T.

M&T Bank

 Equal Housing Lender. ©2025 M&T Bank. Member FDIC. AMP-9008 250422 VF

**“Probably the best
ice cream in the world.”**

